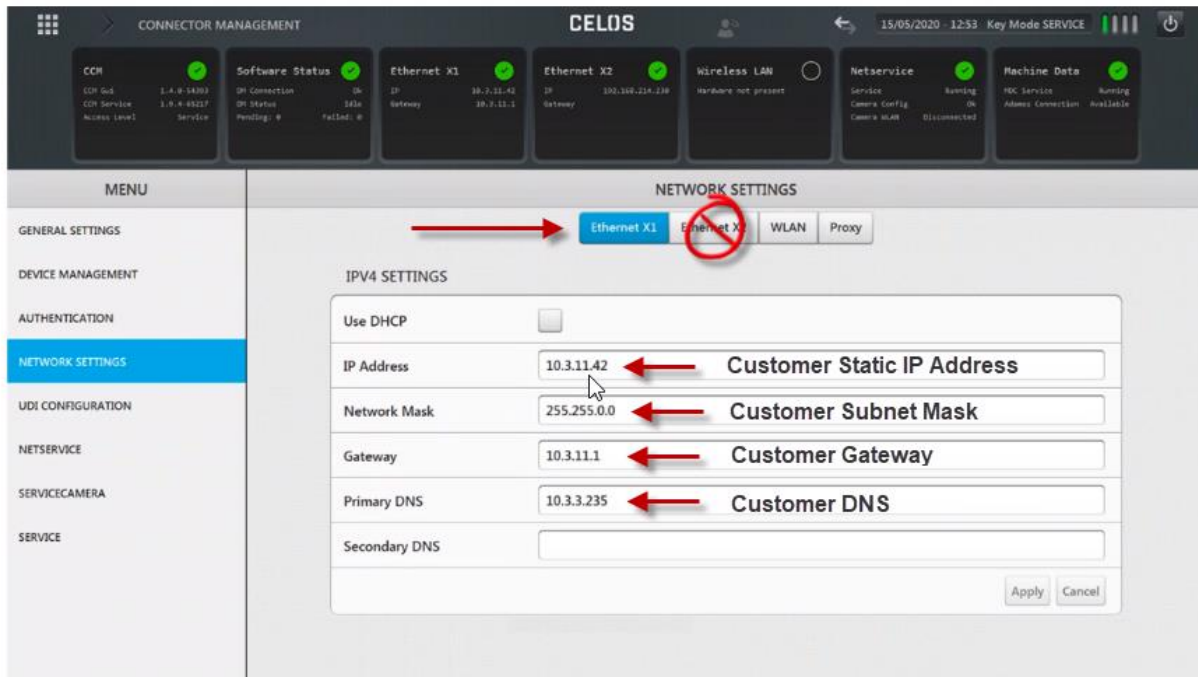


IOT Connector setup / MTConnect

1. In CELOS, please go to Connector Management App and browse to Network Settings tab.
2. Set the static IP here for the ethernet X1 network adapter.

Factory default IP settings in Ethernet X2 MUST NOT be changed



3. Then click on the Machine Data tab.
4. In Machine Data tab, please enable and check MTConnect settings in Data Configuration tab.
5. Click Apply
6. Please confirm machine can PING Messenger server and Messenger can ping machine IP you set in step 2.

